

Contents

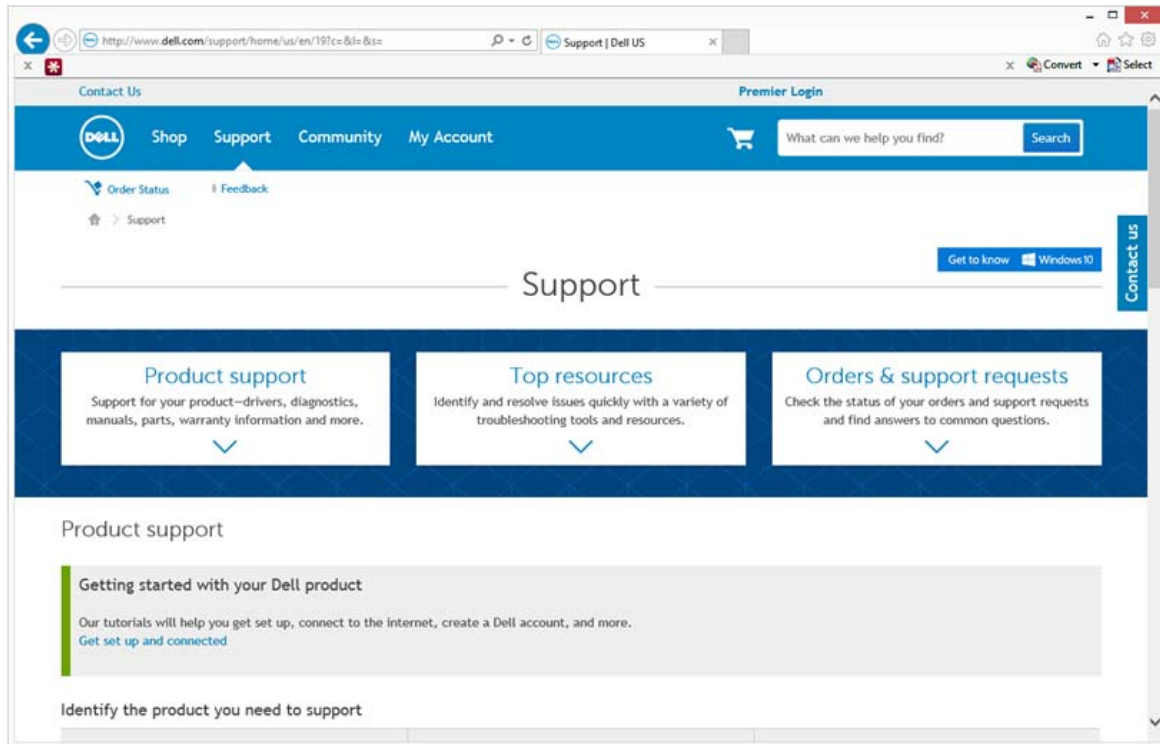
- Update Dell ControlVault Drivers and Firmware 1
 - Download Latest Drivers 2
 - Install Dell ControlVault Driver 6
 - Verify Driver Installation 11
 - Install Dell ControlVault Firmware 11

Update Dell ControlVault Drivers and Firmware

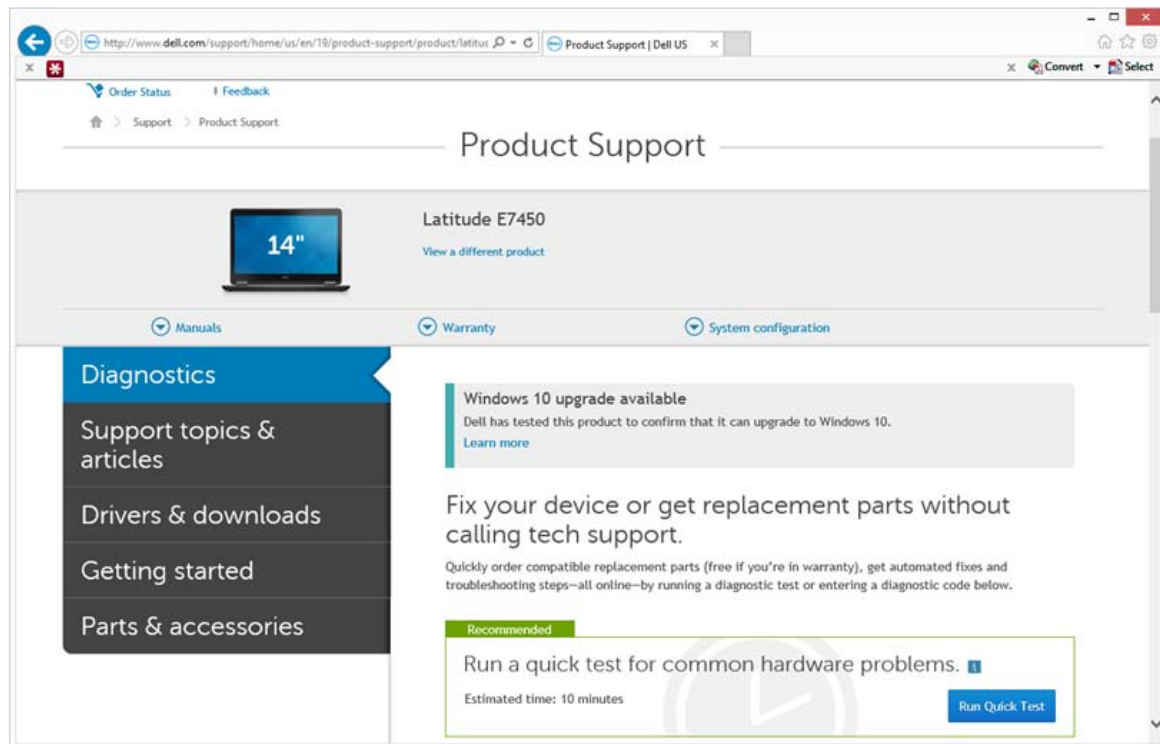
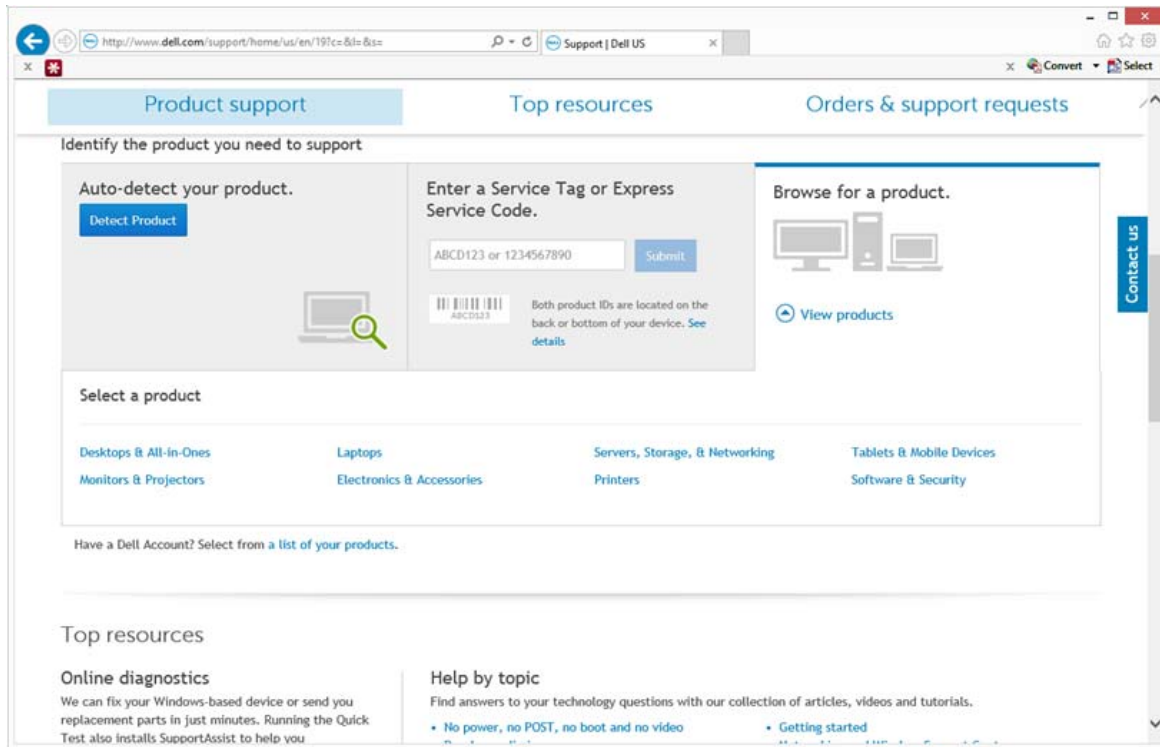
- Dell ControlVault drivers and firmware that are installed on Dell computers at the factory are outdated and should be updated by following this procedure, in this order.
- If an error message is received during DDP|EE or DDP|ESS installation prompting you to exit the installer to update Dell ControlVault drivers, the message may be safely dismissed to continue with the installation of DDP|EE or DDP|ESS. The Dell ControlVault drivers (and firmware) can be updated after DDP|EE or DDP|ESS installation is complete.

Download Latest Drivers

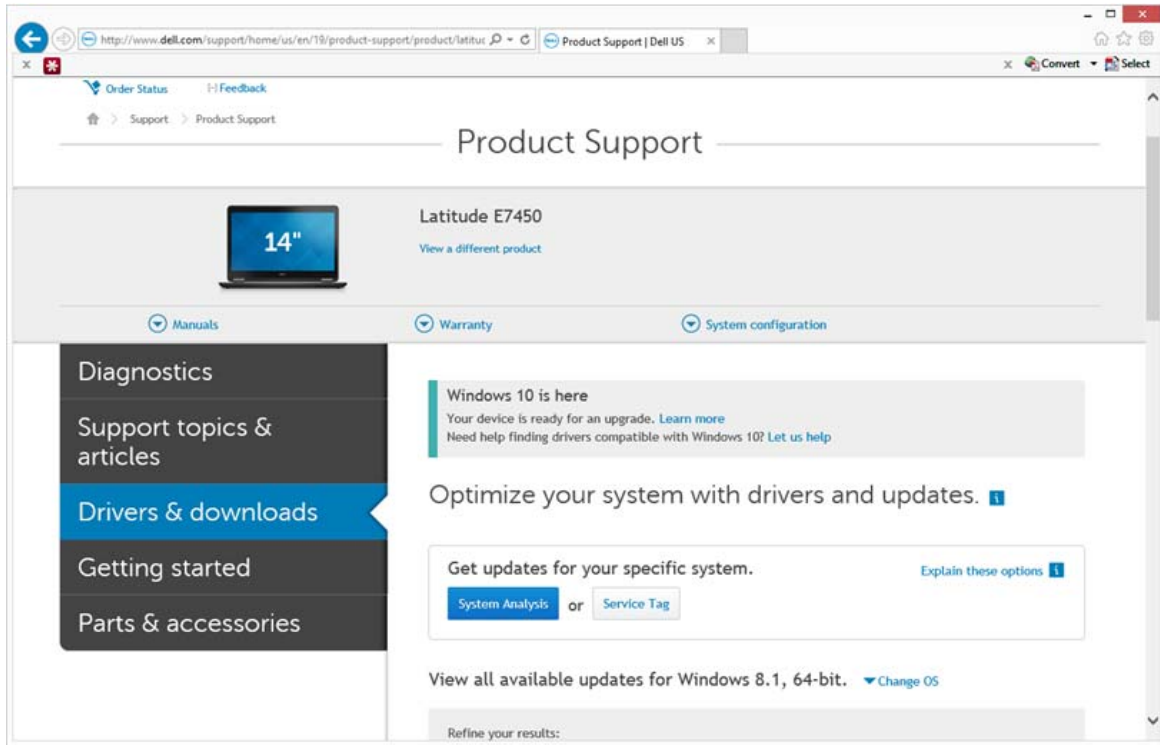
- 1 Go to www.support.dell.com.



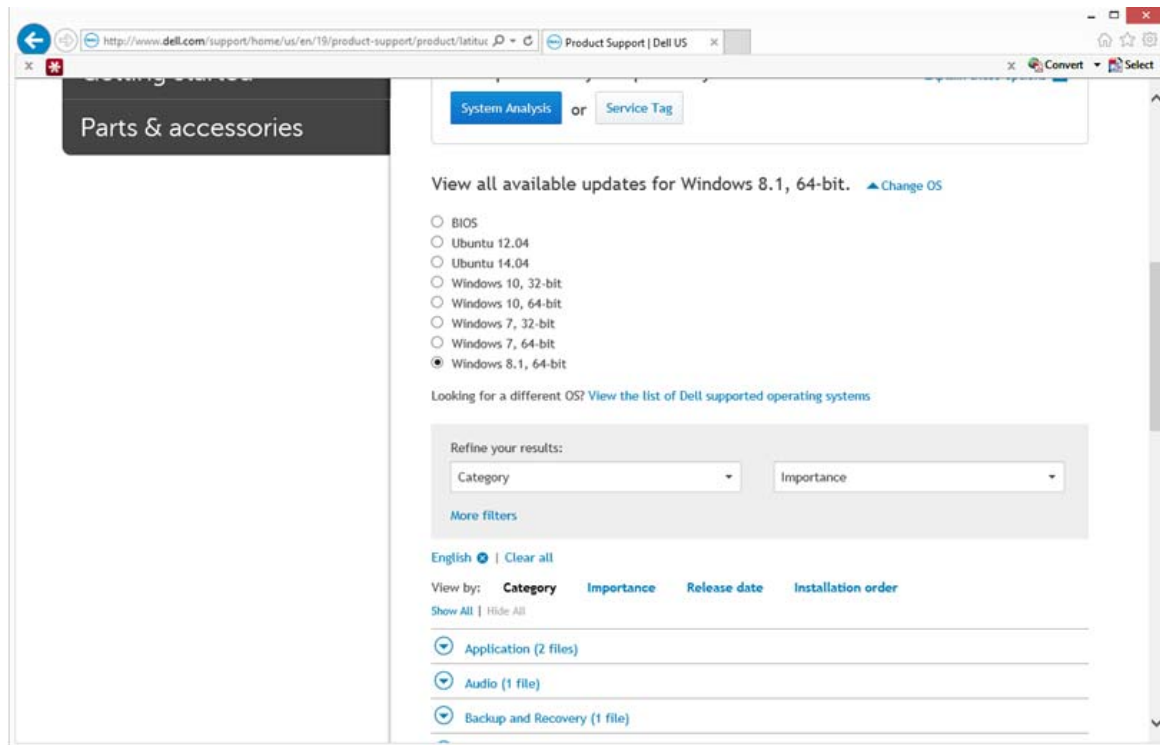
2 Select your computer model.



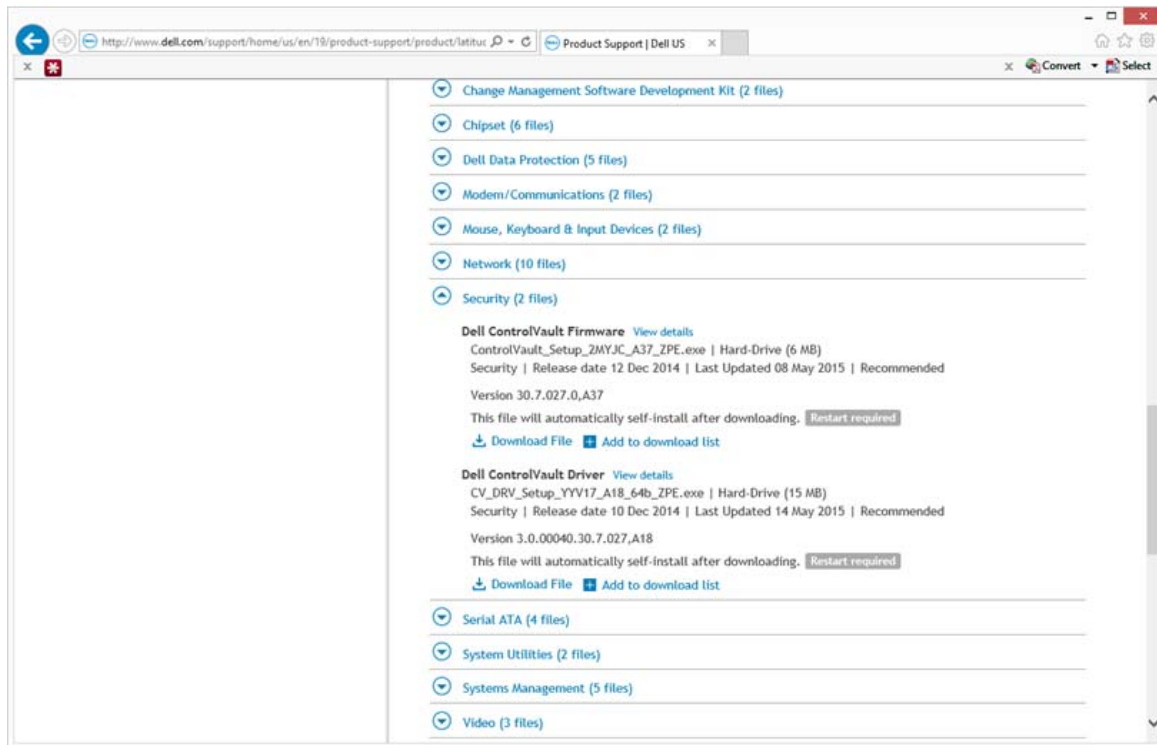
3 Select Drivers & Downloads.



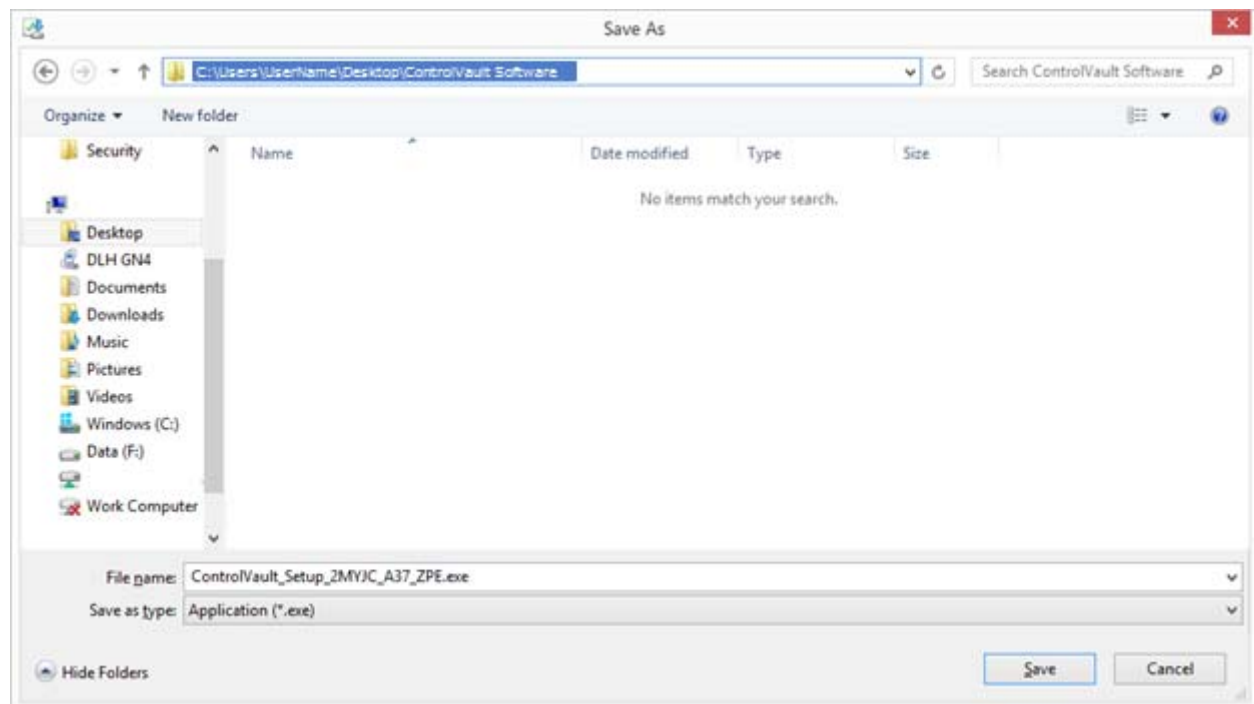
4 Select the Operating System of the target computer.



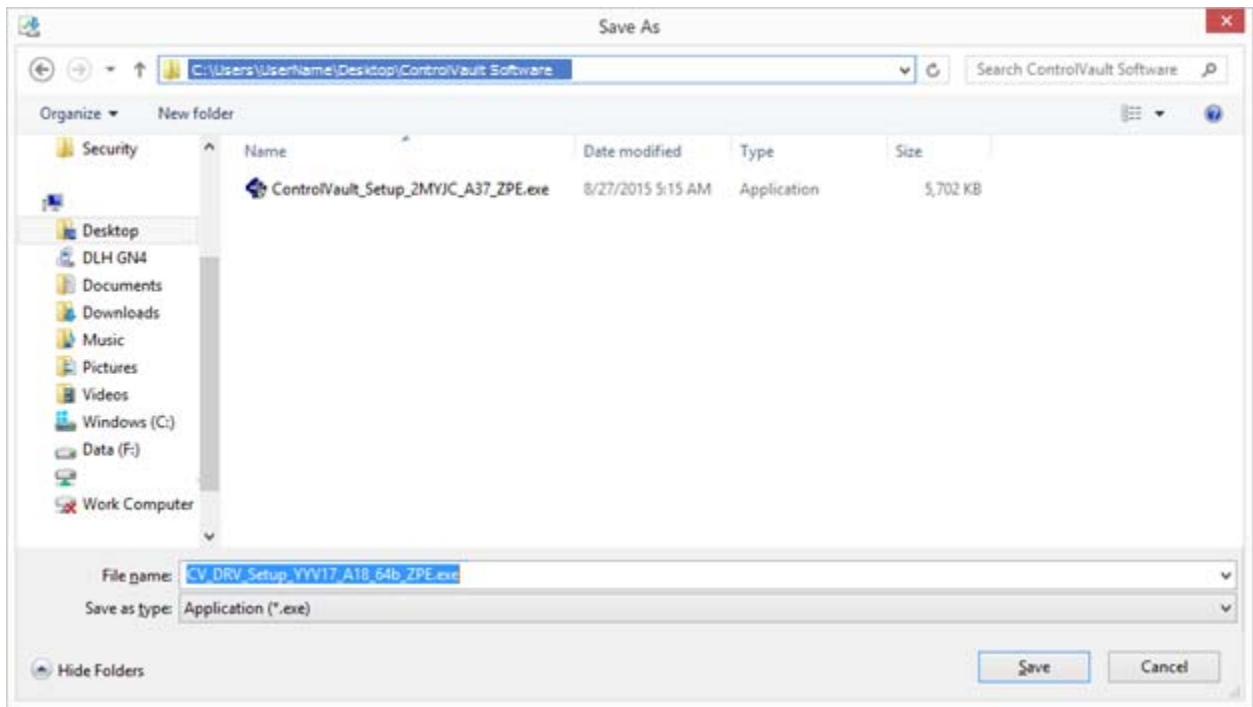
5 Expand the **Security** category.



6 Download and save the Dell ControlVault Drivers.



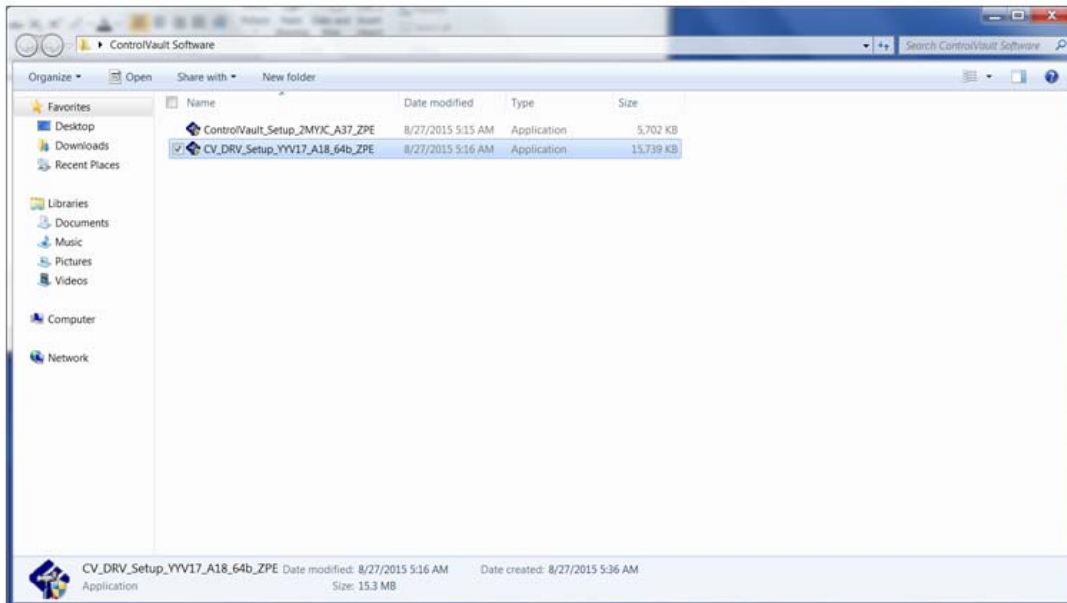
7 Download and save the Dell ControlVault Firmware.



8 Copy the drivers and firmware to the target computers, if needed.

Install Dell ControlVault Driver

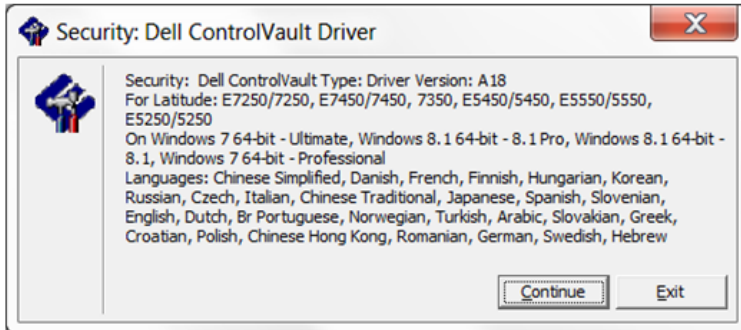
1 Navigate to the folder which you downloaded the driver installation file.



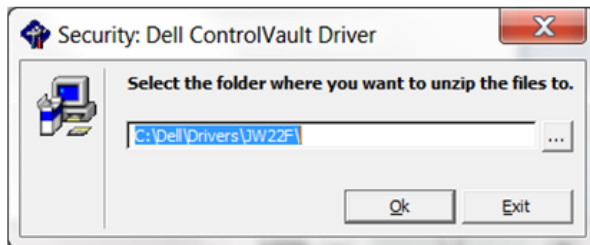
2 Double-click the Dell ControlVault driver to launch the self-extracting executable file.

TIP: Be sure to install the driver first. The filename of the driver *at the time of this document creation* is ControlVault_Setup_2MYJC_A37_ZPE.exe.

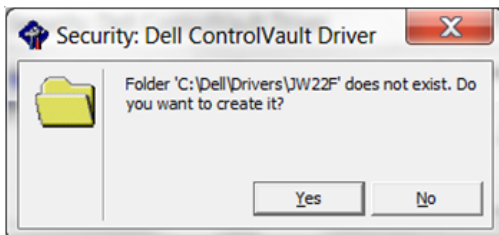
3 Click **Continue** to begin.



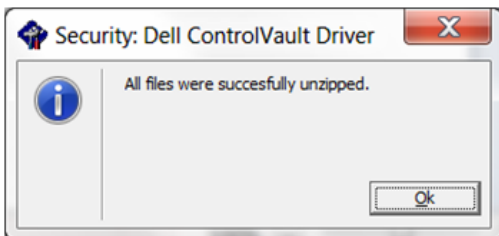
4 Click **Ok** to unzip the driver files in the default location of C:\Dell\Drivers\



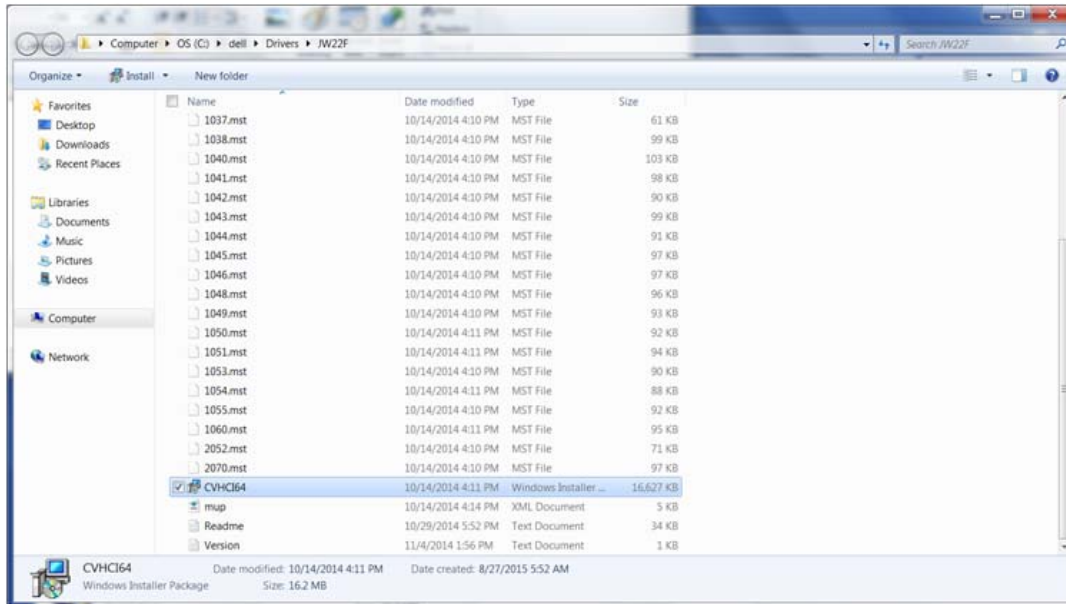
5 Click **Yes** to allow the creation of a new folder.



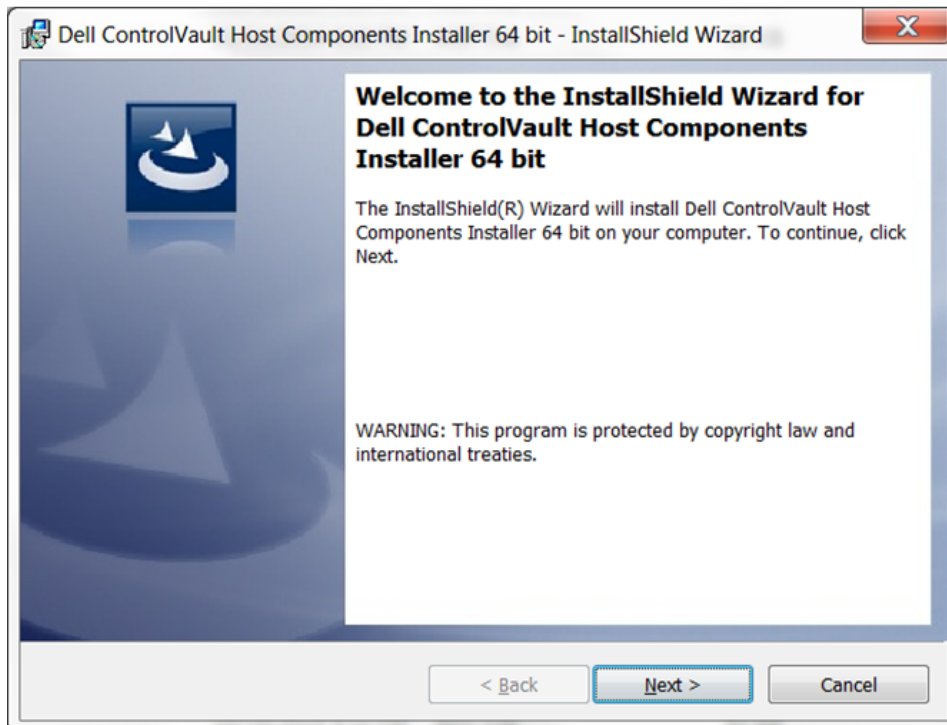
6 Click **Ok** when the successfully unzipped message displays.



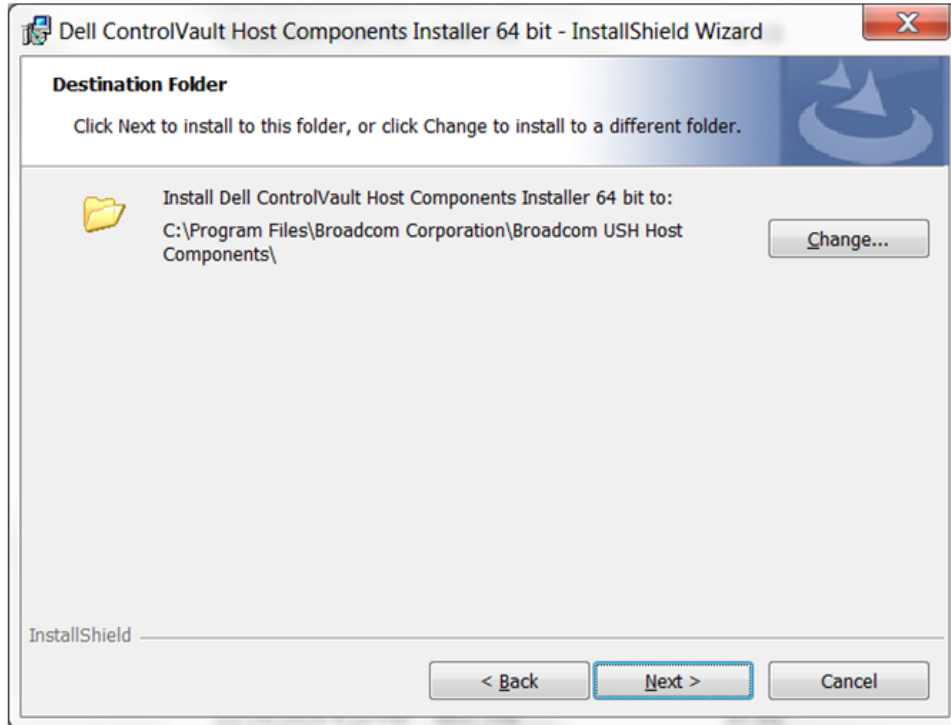
- 7 The folder which contains the files should display after extraction. If not, navigate to the folder to which you extracted the files. In this case, the folder is **JW22F**.



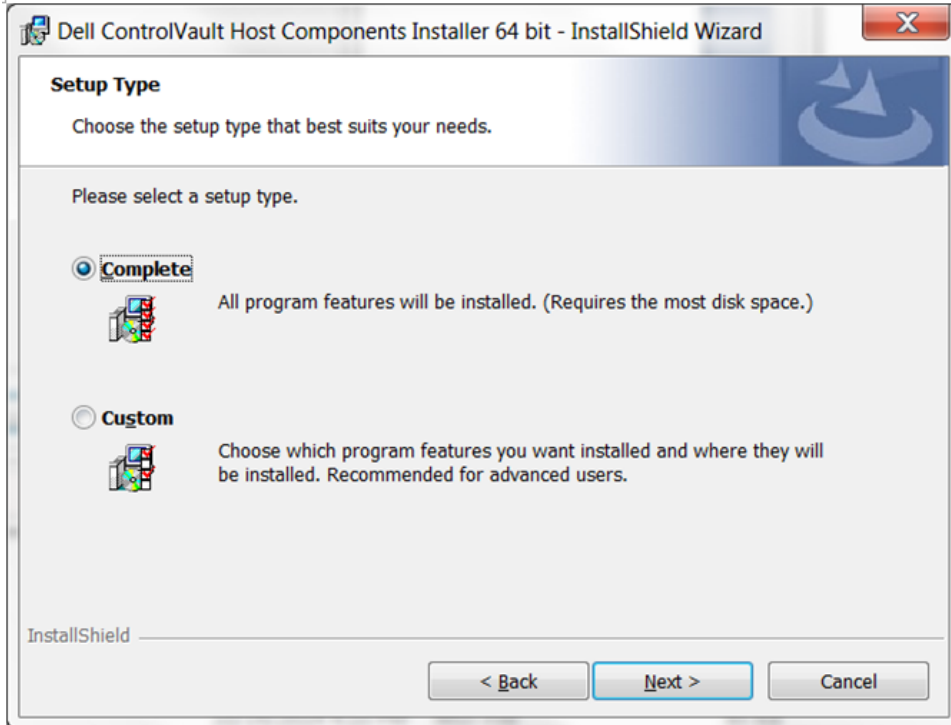
- 8 Double-click **CVHCI64.MSI** to launch the driver installer. [this example is **CVHCI64.MSI** in this example (CVHCI for a 32-bit computer)].
- 9 Click **Next** at the Welcome screen.



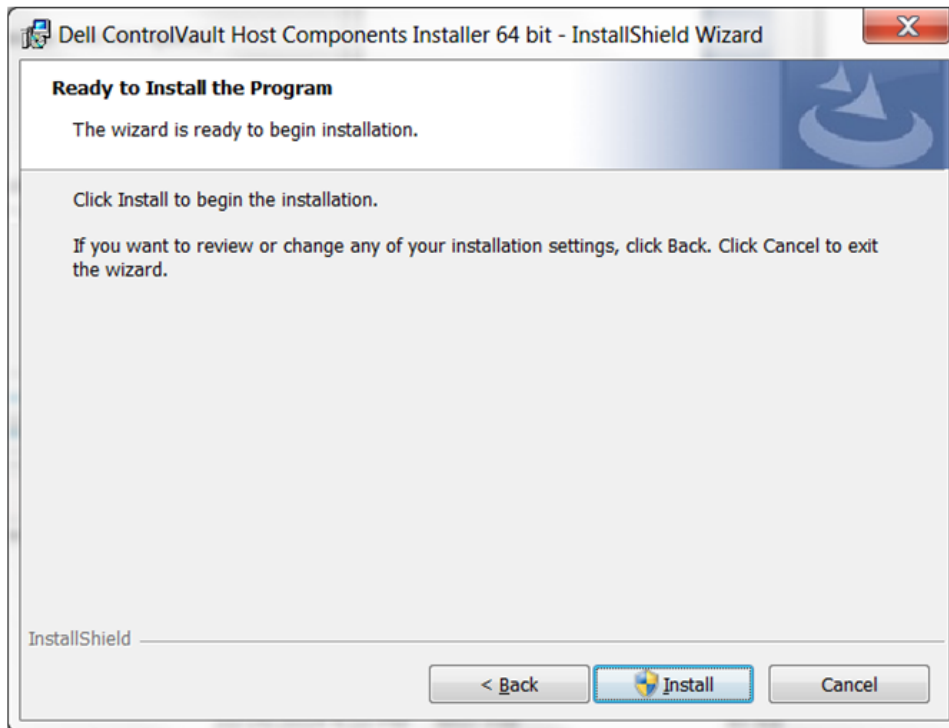
- 10 Click **Next** to install the drivers in the default location of C:\Program Files\Broadcom Corporation\Broadcom USH Host Components\.



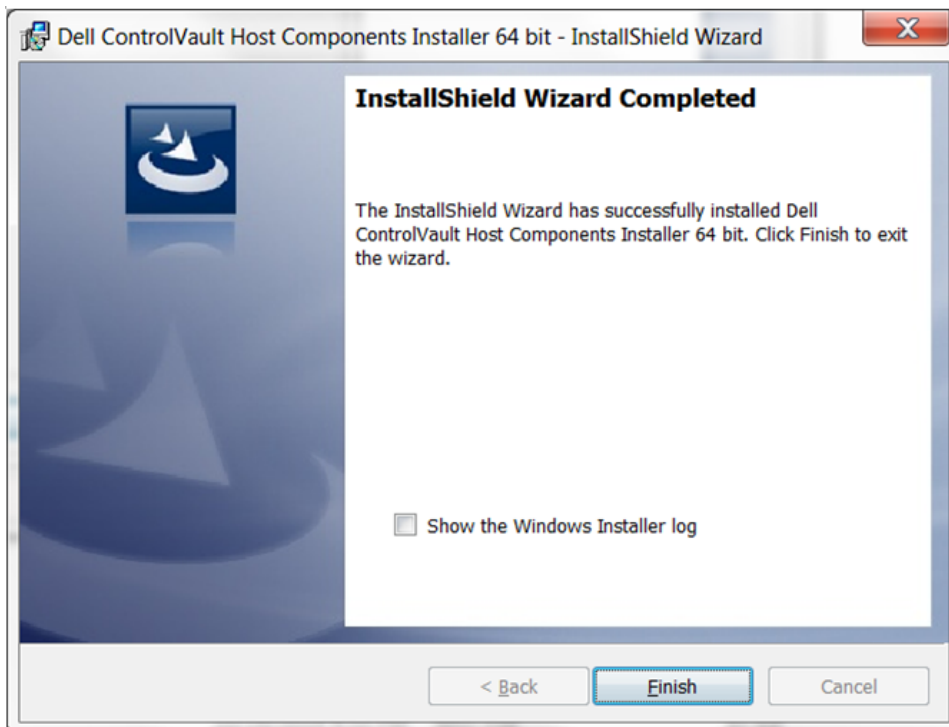
- 11 Select the **Complete** option and click **Next**.



- 12 Click **Install** to begin the installation of the drivers.



- 13 Optionally check the box to display the installer log file. Click **Finish** to exit the wizard.

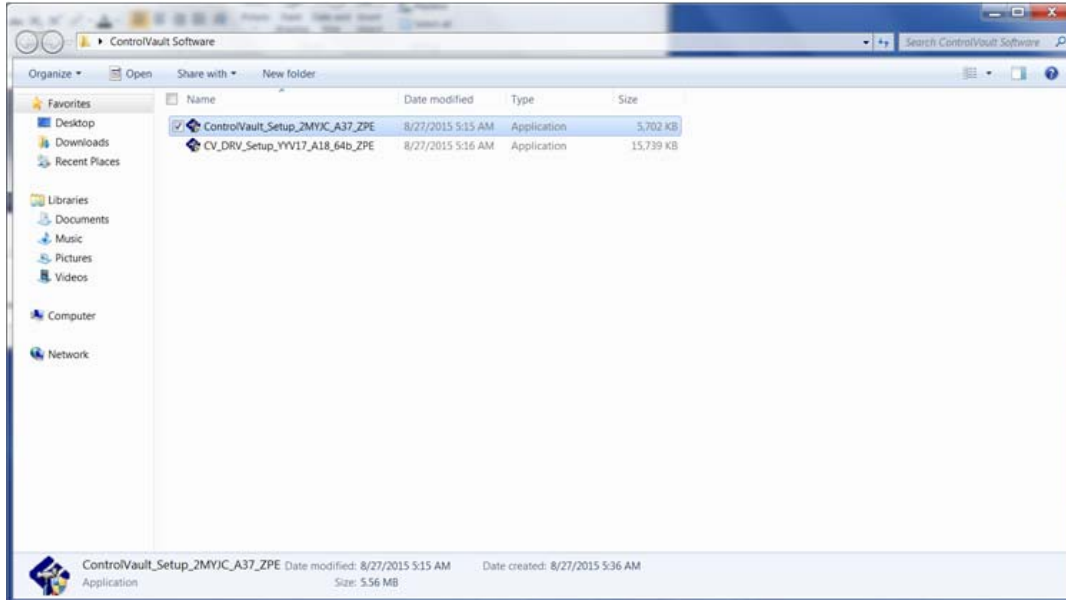


Verify Driver Installation

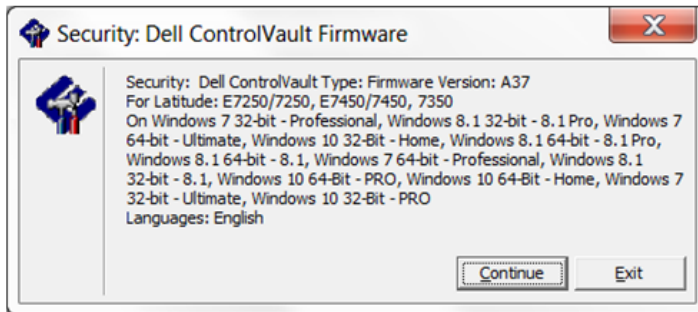
- The Device Manager will have a Dell ControlVault device (and other devices) depending on the operating system and hardware configuration.

Install Dell ControlVault Firmware

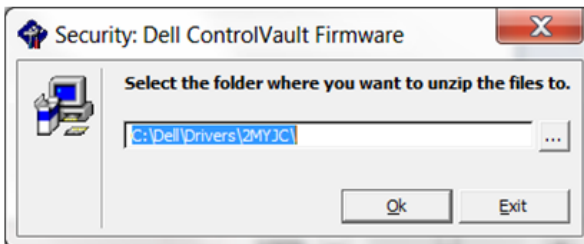
- 1 Navigate to the folder which you downloaded the firmware installation file.



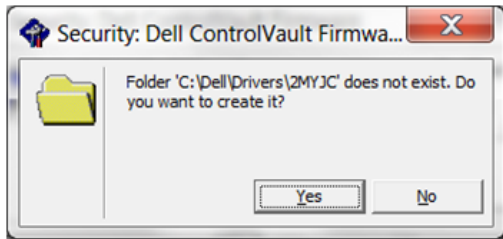
- 2 Double-click the Dell ControlVault firmware to launch the self-extracting executable file.
- 3 Click **Continue** to begin.



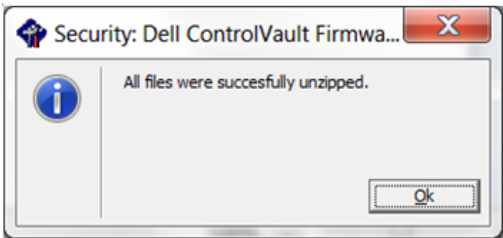
- 4 Click **Ok** to unzip the driver files in the default location of C:\Dell\Drivers\



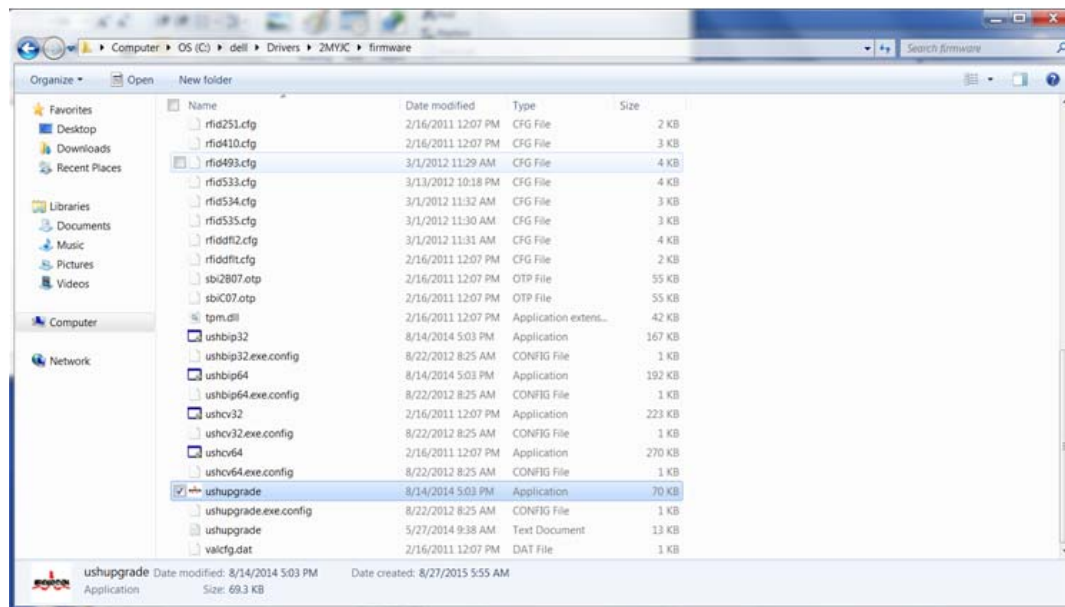
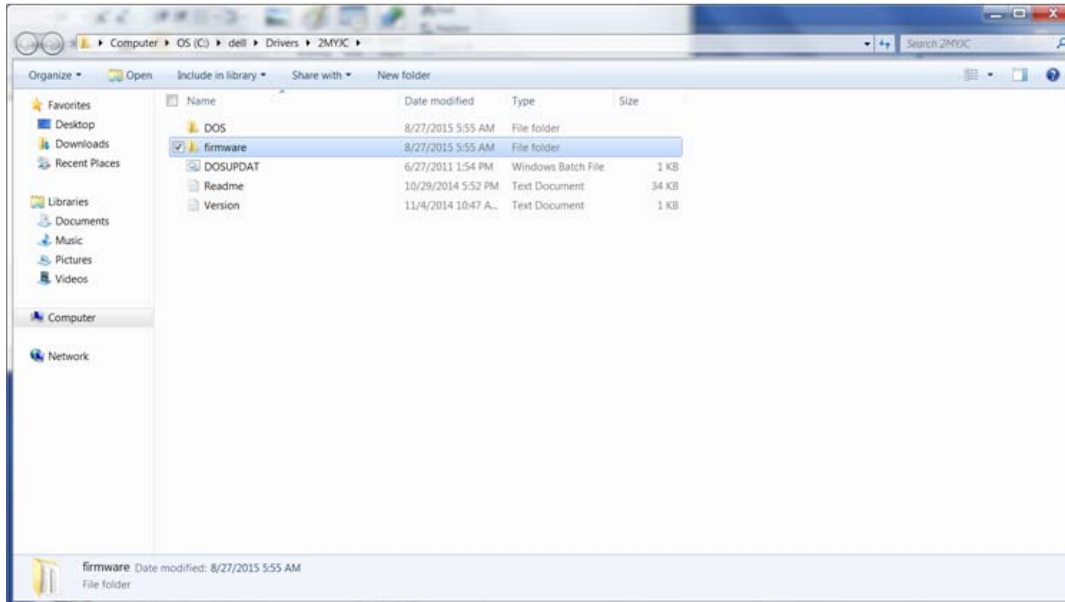
5 Click **Yes** to allow the creation of a new folder.



6 Click **Ok** when the successfully unzipped message displays.

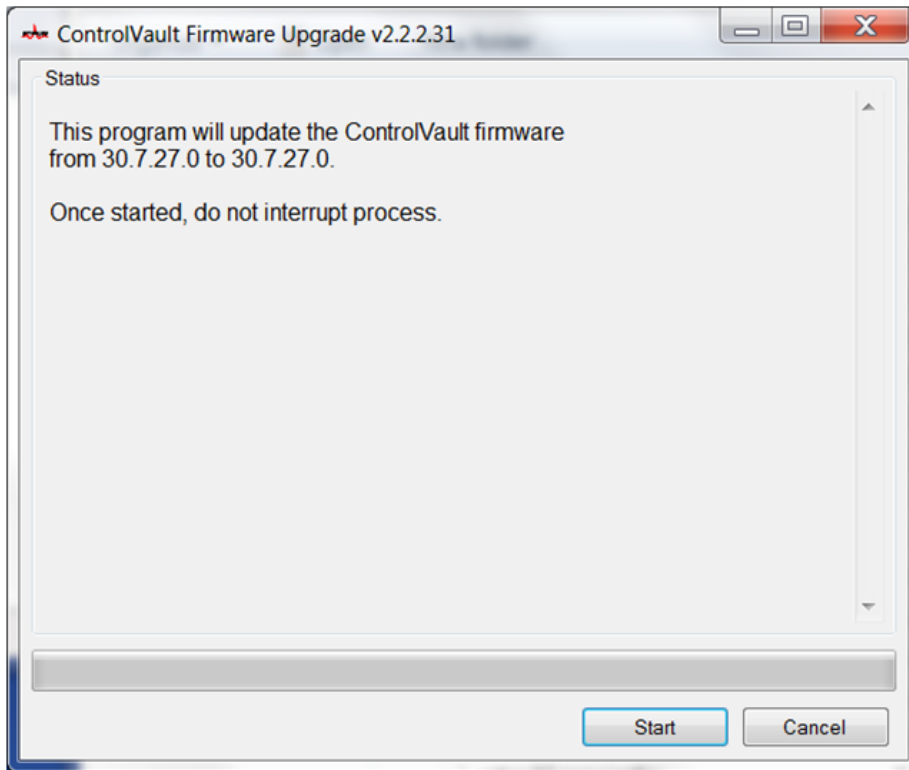


- 7 The folder which contains the files should display after extraction. If not, navigate to the folder to which you extracted the files. Select the **firmware** folder.



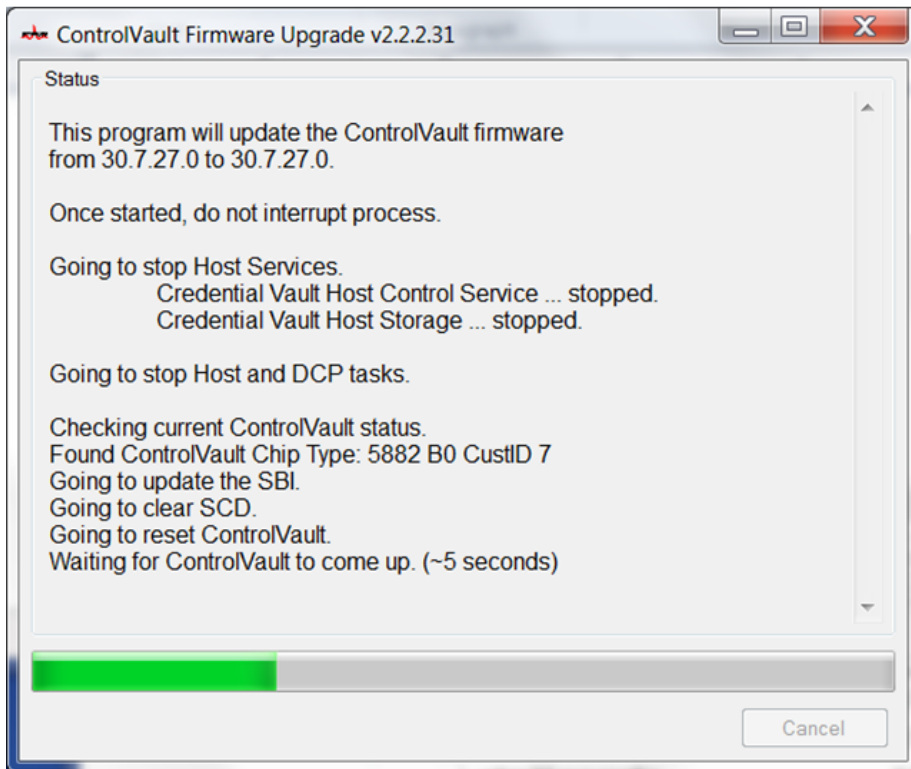
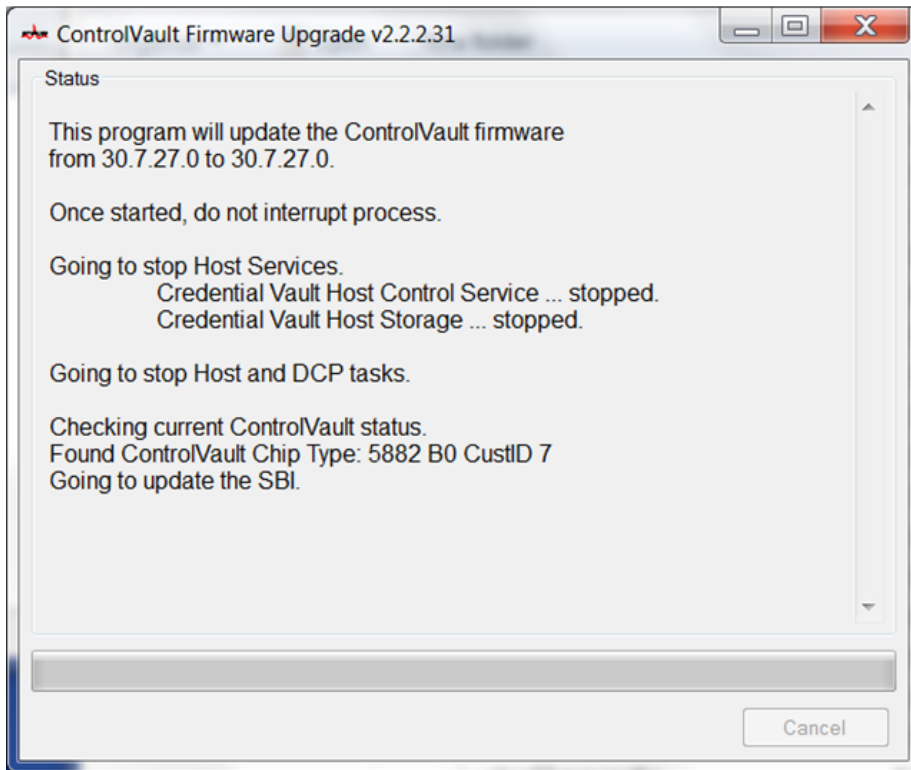
- 8 Double-click **ushupgrade.exe** to launch the firmware installer.

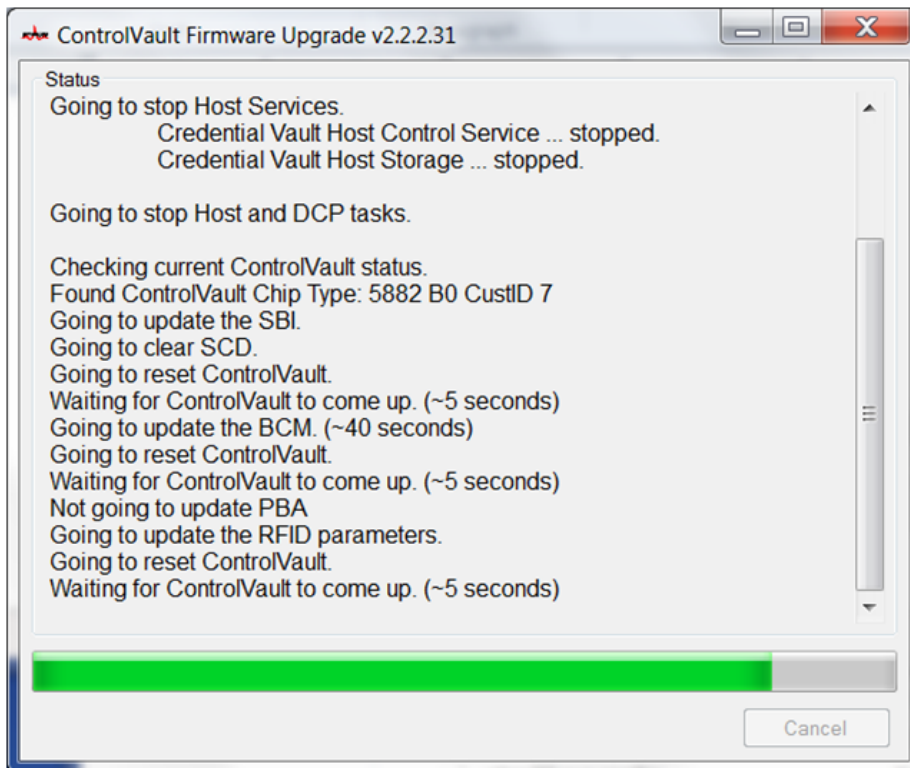
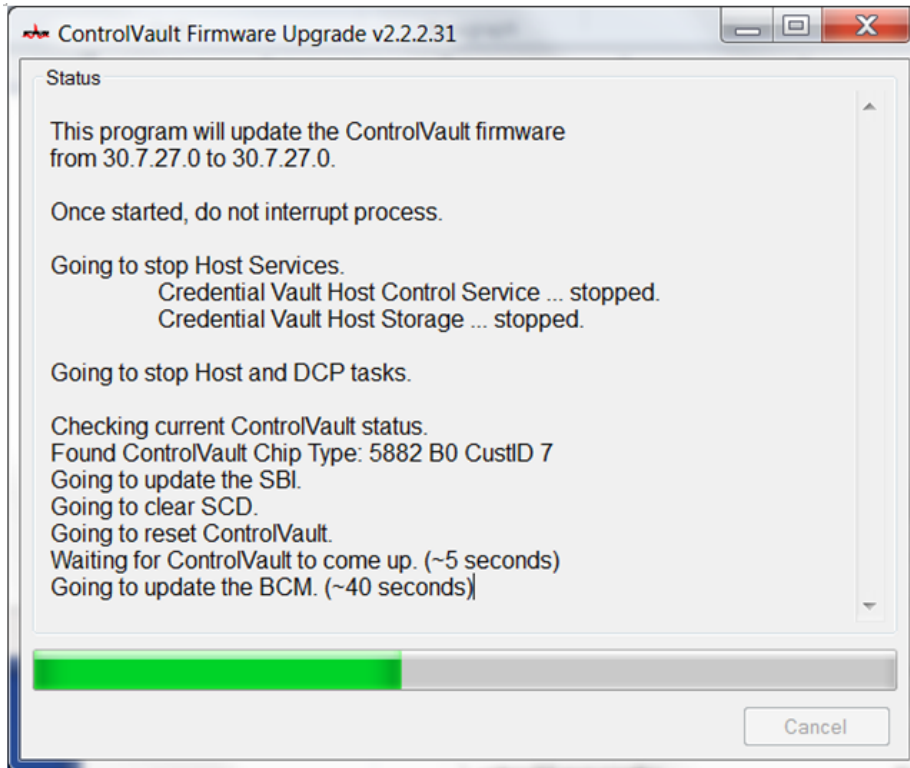
9 Click **Start** to begin the firmware upgrade.



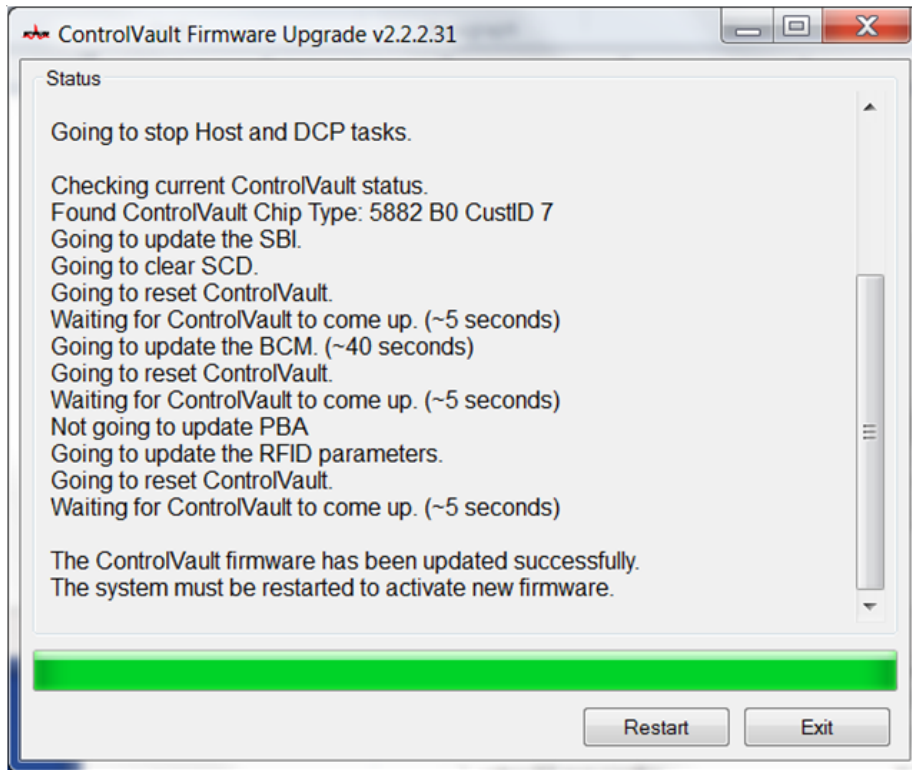
IMPORTANT: You may be asked to enter the admin password if upgrading from an older version of firmware. Enter **Broadcom** as the password and click **Enter** if presented with this dialog.

Several status messages display.





10 Click **Restart** to complete the firmware upgrade.



The update of the Dell ControlVault drivers and firmware is complete.

